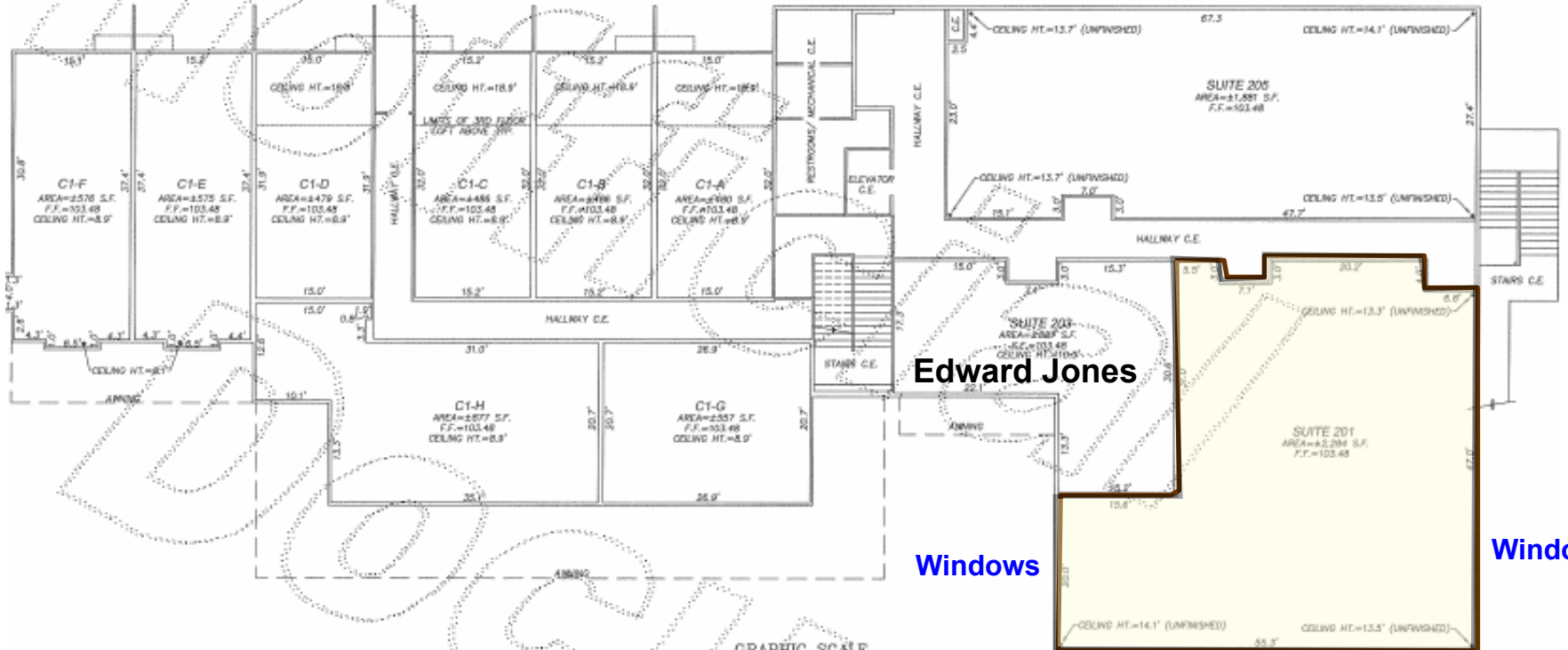


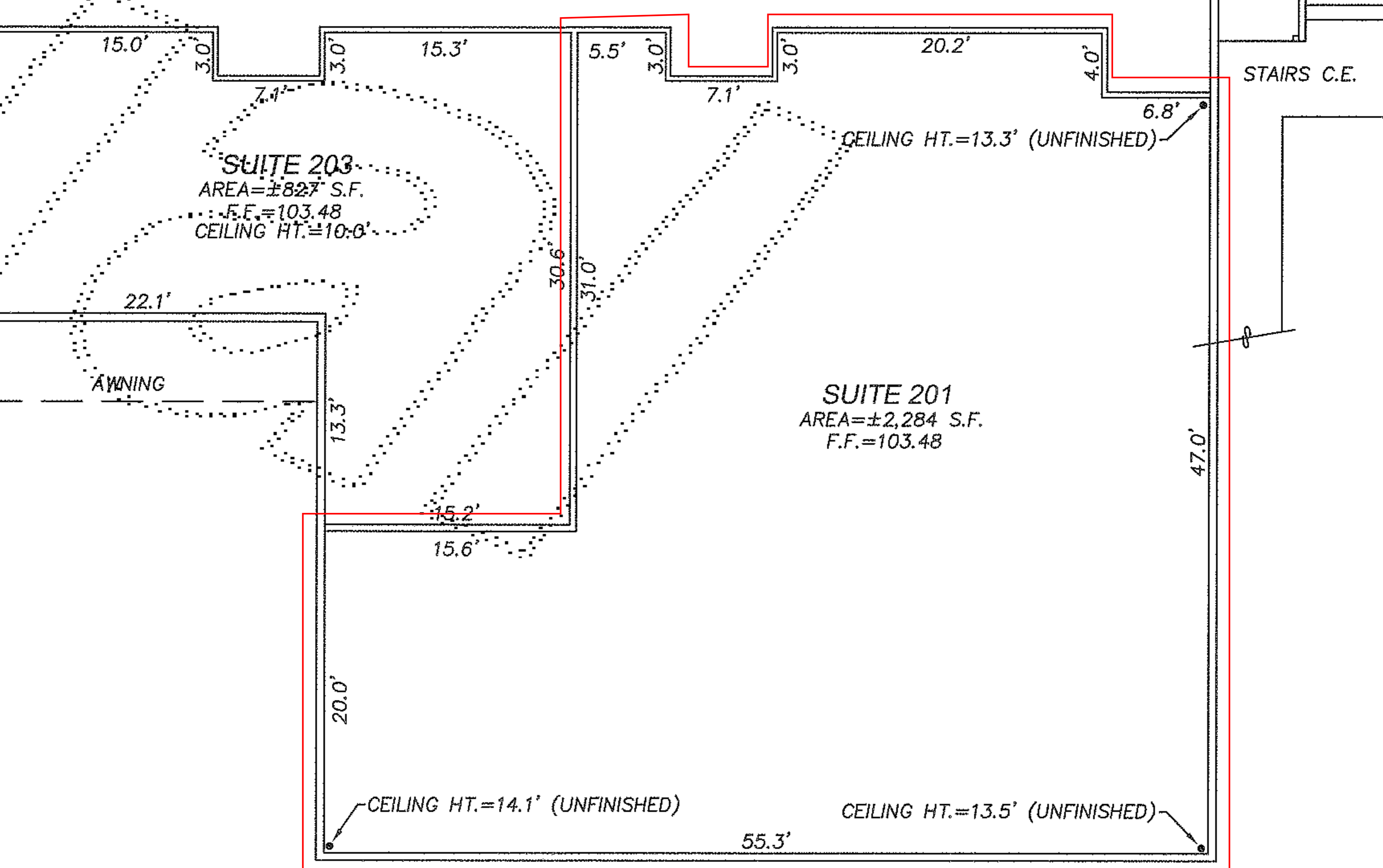
# COPPER HILL SQUARE CONDOMINIUM PHASE 1

IN THE S.W. 1/4, SEC. 13, T.26N., R.6E., W.M., CITY OF DUVALL, KING COUNTY, WASHINGTON



BUILDING C1 FLOOR 2





SUITE 203  
AREA=±827 S.F.  
F.F.=103.48  
CEILING HT.=10.0'

SUITE 201  
AREA=±2,284 S.F.  
F.F.=103.48

STAIRS C.E.

AWNING

CEILING HT.=13.3' (UNFINISHED)

CEILING HT.=14.1' (UNFINISHED)

CEILING HT.=13.5' (UNFINISHED)

15.0'

3.0'

15.3'

5.5'

3.0'

20.2'

4.0'

7.1'

7.1'

6.8'

22.1'

13.3'

30.6'

31.0'

15.2'

15.6'

20.0'

55.3'

47.0'